

# OPMT

- PANNELLI OPERATORE TOUCH SCREEN
- DISPLAY TFT WIDESCREEN AD ALTA RISOLUZIONE RETROILLUMINATI LED
- 4.3" E 7"



## CARATTERISTICHE

DISPLAY	OPMT		
	8050 IE	8071 IE	8073 IE
Display	4.3" TFT	7" TFT	
Risoluzione (pixel)	480 x 272	800 x 480	
Luminosità (cd/m²)	400		
Contrasto	500:1		800:1
Colori	LED		
Retroilluminazione	16.7 M		
Touch screen	Resistivo analogico a 4 fili		
Processore	32 bit RISC 600 MHz		
<b>MEMORIA</b>			
Flash (MB)	128 MB		
RAM (MB)	128 MB		
<b>PORTE I/O</b>			
USB Host	2.0 X 1		
Ethernet	10/100 base-T x 1		10/100/1000 base-T x 2
COM port	COM1 (RS232/485 2 e 4w) COM3 (RS485 2w)	COM1 (RS232) COM2 (RS485 2 e 4w) COM3 (RS485 2w)	COM1 (RS232) COM2 (RS485 2 e 4w) COM3 (RS232/RS485 2w)
RTC (a bordo)	Available		
<b>ALIMENTAZIONE</b>			
Alimentazione	24 VDC ±20%		
Isolamento alimentazione	Disponibile		
Assorbimento (mA @24V)	400	450	600
<b>MECCANICHE</b>			
Custodia	Plastica		
Dimensioni WxHxD	128 x 102 x 32 mm	200.3 x 146.3 x 34 mm	
Cut-out pannello	119 x 93 mm	192 x 138 mm	
Peso	250 g	600 g	
Grado di protezione	NEMA4/IP65		
Montaggio	A pannello		
Temperatura esercizio	-20°... 60°C (-4°...140°F)		
Temperatura stoccaggio	0°... 50°C (32°...122°F)		
Umidità esercizio	10...90% RH senza condensa		
<b>SOFTWARE</b>			
Software (optional)	Programmabile con EasyBuilderPro		
<b>CERTIFICAZIONI E MARCHI</b>			
Conformità	CE, UL listed	CE, UL listed, ATEX Zone 2/22 Cat. 3 G/D	CE, ATEX Zone 2/22 Cat. 3 G/D, UL listed

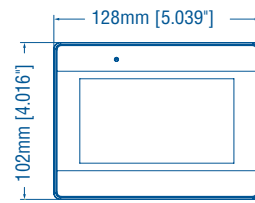
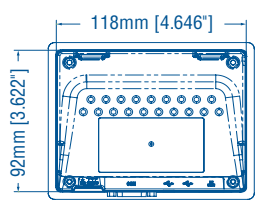

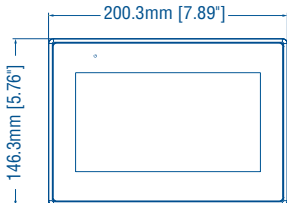
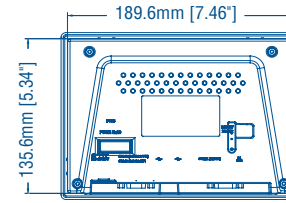



EVERYTHING UNDER CONTROL

## CODIFICA

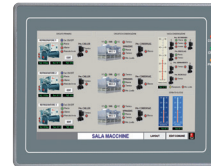
OPMT	
8050 IE	4.3" TFT, 16.7M colori, 480x272 p., 2 COM
8071 IE	7" TFT, 16.7M colori, 800x480 p., 3 COM
8073 IE	7" TFT, 16.7M colori, 800x480 p., 3 COM

## DIMENSIONI

OPMT 8050 IE	
	
Front View	Rear View
	
Bottom View	Le dimensioni sono espresse in mm
OPMT 8071 IE/ OPMT 8073 IE	
	
Front View	Rear View
	
Bottom View	Le dimensioni sono espresse in mm

# OPMT

- PANNELLI OPERATORE TOUCH SCREEN
- DISPLAY TFT WIDESCREEN AD ALTA RISOLUZIONE RETROILLUMINATI LED
- 9.7", 12.1" E 15"



## FEATURES

DISPLAY	OPMT			
	8092 XE	8090 XE	8121 XE	8150 XE/N
Display	9.7" TFT			
Risoluzione (pixel)	1024 x 768			
Luminosità (cd/m <sup>2</sup> )	350		500	400
Contrasto	500:1		700:1	1000:1
Colori	LED			
Retroilluminazione	262K			16.2 M
Touch screen	Resistivo analogico a 4 fili			
Processore	32 bit RISC 1GHz			
<b>MEMORIA</b>				
Flash (MB)	512			256
RAM (MB)	256			
<b>PORTE I/O</b>				
Slot SD card	Non disponibile			SD/SDHC
USB Host	2.0 x 1			
USB Client	Non disponibile			
Ethernet	10/100/1000 Base-T x 2	10/100 Base-T x 1		10/100 Base-T x 1
CAN bus	Disponibile	Non disponibile		
COM port	COM1 RS232 COM2 RS485 2w/4w COM3 RS232 or RS485 2w	COM1 RS232 COM2 RS485 2w/4w COM3 RS485 2w/RS232		COM1 RS232/RS485 2w/4w COM3 RS485 2w
RS485 doppio isolamento	Non disponibile			Disponibile
RTC (a bordo)	Disponibile			
<b>POWER SUPPLY</b>				
Alimentazione	24 VDC ±20%			
Assorbimento (mA @24V)	650	500	800	1.2A
<b>MECHANICAL</b>				
Custodia	Plastica		Alluminio	
Dimensioni WxHxD	260.6 x 203.1 x 36.5 mm		317 x 244 x 46 mm	366 x 293 x 57 mm
Cut-out pannello	250 x 192 mm		305 x 231 mm	352 x 279 mm
Peso	850 g		2.100 g	2.750 g
Grado di protezione	NEMA4/IP65		IP66/NEMA4	NEMA4/IP65
Montaggio	A pannello			
Temperatura esercizio	-20°... 60°C (-4°...140°F)			
Temperatura stoccaggio	0°... 50°C (32°...122°F)			
Umidità esercizio	10...90% RH senza condensa			
<b>SOFTWARE</b>				
Software (optional)	Programmabile con EasyBuilderPro			
<b>CERTIFICAZIONI E MARCHI</b>				
Conformità	CE, ATEX Zone 2/22 Cat. 3 G/D, UL listed UL type 4X (indoor use)	CE, ATEX Zone 2/22 Cat. 3 G/D	CE, UL listed UL type 4X (indoor use)	CE, ATEX Zone 2/22 Cat. 3 G/D, UL listed UL type 4X (indoor use)



EVERYTHING UNDER CONTROL

## CODIFICA

OPMT	
8092 XE	9.7" TFT, 262k colori, 1024 x 768 p., 3 COM
8090 XE	9.7" TFT, 262k colori, 1024 x 768 p., 3 COM
8121 XE	12.1" TFT, 16.2M colori, 1024 x 768 p., 2 COM
8150 XE/N	15" IPS, 16.2M colori, 1024 x 768 p., 2 COM

## DIMENSIONI

OPMT 8090 XE/ OPMT 8092 XE	
<p>260.6mm [10.26"]</p> <p>203.1mm [8.00"]</p> <p>Front View</p>	<p>247.7mm [9.75"]</p> <p>190.2mm [7.49"]</p> <p>Rear View</p>
<p>5.5mm [1.44"]</p> <p>Bottom View</p> <p>Le dimensioni sono espresse in mm</p>	
OPMT 8121 XE	
<p>317mm [12.49"]</p> <p>244mm [9.61"]</p> <p>Front View</p>	<p>303mm [11.93"]</p> <p>229mm [9.01"]</p> <p>Rear View</p>
<p>46mm [1.82"]</p> <p>Bottom View</p> <p>Le dimensioni sono espresse in mm</p>	
OPMT 8150 XE/N	
<p>366mm [14.41"]</p> <p>293mm [11.54"]</p> <p>Front View</p>	<p>350mm [13.78"]</p> <p>277mm [10.91"]</p> <p>75mm [2.95"]</p> <p>75mm [2.95"]</p> <p>Rear View</p>
<p>57mm [2.24"]</p> <p>Bottom View</p> <p>Le dimensioni sono espresse in mm</p>	