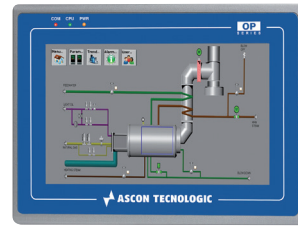


OPMT

- TOUCH SCREEN OPERATOR PANELS
- TFT WIDESCREEN HIGH RESOLUTION BACKLIGHTED LED DISPLAY
- 4.3" E 7"



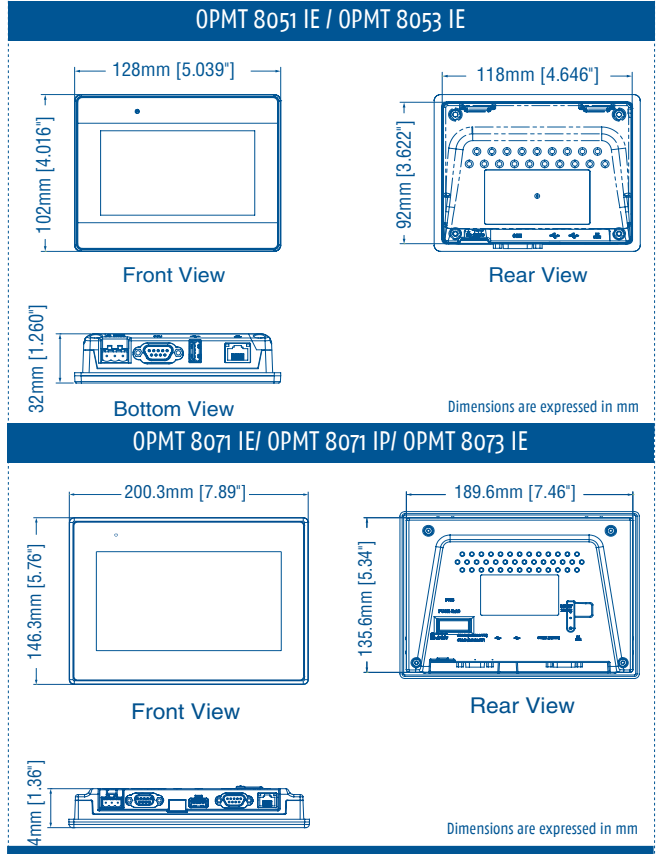
FEATURES

DISPLAY	OPMT				
	8051 IE	8053 IE	8071 IE	8071 IP	8073 IE
Display	4.3" TFT		7" TFT		
Resolution (pixel)	480 x 272		800 x 480		
Brightness (cd/m ²)	400		300	400	
Contrast ratio	500:1				800:1
Back Light type	LED				
Colours	16.7 M				
Touch panel	4 wire Resistive Type				
Processor	32 bit RISC 600 MHz				
MEMORY					
Flash (MB)	128 MB				
RAM (MB)	128 MB				
I/O PORTS					
USB Host	2.0 x 1				
Ethernet	10/100 base-T x 1	10/100/1000 base-T x 2 10/100 base-T x 1	10/100 base-T x 1		10/100/1000 base-T x 2
COM port	COM1 (RS232/485 2 e 4w) COM3 (RS485 2w)		COM1 (RS232) COM2 (RS485 2 e 4w) COM3 (RS485 2w)	COM1 (RS232 4w) COM2 (RS485 2 e 4w)	COM1 (RS232) COM2 (RS485 2 e 4w) COM3 (RS232/RS485 2w)
RTC (on board)	Available				
POWER SUPPLY					
Power supply	24 VDC ±20%				
Power supply isolation	Built-in				
Power consumption (mA@24V)	400	450	450	500	600
MECHANICAL					
Case	Plastic				
Weight	250 g		600 g	520 g	600 g
Dimensions WxHxD	128 x 102 x 32 mm		200.3 x 146.3 x 34 mm		
Panel cut-out	119 x 93 mm		192 x 138 mm		
Protection degree	NEMA4/IP65				
Mounting	On panel				
Storage temperature	-20°... 60°C (-4°...140°F)				
Operating temperature	0°... 50°C (32°...122°F)				
Operating humidity	10...90% RH without condensation				
SOFTWARE					
Software	EasyBuilderPro, Easy Access 2.0 (optional)	EasyBuilderPro, Easy Access 2.0 (built-in)	EasyBuilderPro, Easy Access 2.0 (optional)		EasyBuilderPro, Easy Access 2.0 (built-in)
COMPLIANCE					
Compliance	CE, UL listed		CE, UL listed, ATEX Zone 2/22 Cat. 3 G/D	CE	CE, UL listed ATEX Zone 2/22 Cat. 3 G/D

HOW TO ORDER

OPMT	
8050 iE	4.3" TFT, 16.7M colours, 480x272 p., 2 COM
8053 iE	4.3" TFT, 16.7M colours, 480x272 p., 2 COM, 2 Ethernet
8071 iE	7" TFT, 16.7M colours, 800x480 p., 3 COM
8071 iP	7" TFT, 16.7M colours, 800x480 p., 2 COM
8073 iE	7" TFT, 16.7M colours, 800x480 p., 3 COM

DIMENSIONS



OPMT

- TOUCH SCREEN OPERATOR PANELS
- TFT WIDESCREEN HIGH RESOLUTION BACKLIGHTED LED DISPLAY
- 9.7", 12.1" E 15"



FEATURES

DISPLAY	OPMT			
	8092 XE	8090 XE	8121 XE	8150 XE/N
Display	9.7" TFT		12.1" TFT	15" IPS
Resolution (pixel)	1024 x 768			
Brightness (cd/m ²)	350		500	400
Contrast ratio	500:1		700:1	1000:1
Back Light type	LED			
Colours	262K		16.2 M	
Touch panel	4 wire Resistive Type			
Processor	32 bit RISC 1GHz			
MEMORY				
Flash (MB)	512		256	
RAM (MB)	256			
I/O PORTS				
Slot SD card	Not available		SD/SDHC	
USB Host	2.0 x 1			
USB Client	Not available		2.0 x 1	
Ethernet	10/100/1000 Base-T x 2	10/100 Base-T x 1	10/100 Base-T x 1	
CAN bus	Available	Not available		
COM port	COM1 RS232 COM2 RS485 2w/4w COM3 RS232 or RS485 2w	COM1 RS232 COM2 RS485 2w/4w COM3 RS485 2w/RS232	COM1 RS232/RS485 2w/4w COM3 RS485 2w	
RS485 dual isolation	Not available		Available	
RTC	Available			
POWER SUPPLY				
Power supply	24 VDC ±20%			
Power consumption (mA @24V)	650	500	800	1.2A
MECHANICAL				
Case	Plastic		Aluminium	
Dimensions WxHxD	260.6 x 203.1 x 36.5 mm		317 x 244 x 46 mm	366 x 293 x 57 mm
Panel cut-out	250 x 192 mm		305 x 231 mm	352 x 279 mm
Weight	850 g		2.100 g	2.750 g
Protection degree	NEMA4/IP65		IP66/NEMA4	NEMA4/IP65
Mounting	On panel			
Storage temperature	-20°... 60°C (-4°...140°F)			
Operating temperature	0°... 50°C (32°...122°F)			
Operating humidity	10...90% RH without condensation			
SOFTWARE				
Software (optional)	Programmable with EasyBuilderPro			
COMPLIANCE				
Compliance	CE, ATEX Zone 2/22 Cat. 3 G/D, UL listed UL type 4X (indoor use)	CE, ATEX Zone 2/22 Cat. 3 G/D	CE, UL listed UL type 4X (indoor use)	CE, ATEX Zone 2/22 Cat. 3 G/D, UL listed UL type 4X (indoor use)

HOW TO ORDER

OPMT	
8092 XE	9.7" TFT, 262k colours, 1024 x 768 p., 3 COM
8090 XE	9.7" TFT, 262k colours, 1024 x 768 p., 3 COM
8121 XE	12.1" TFT, 16.2M colours, 1024 x 768 p., 2 COM
8150 XE/N	15" IPS, 16.2M colours, 1024 x 768 p., 2 COM

DIMENSIONS

