

# AWF1

- GATEWAY TTL/WI-FI
- PARAMETERS PROGRAMMING VIA PC, MOBILE OR SMART DEVICES
- ANDROID, IOS, WINDOWS



## FEATURES

### FUNCTIONAL

### AWF1

Functions	Built-in HTTP Web Server, support parameter configuration via WEB pages Automatic reconnection to WIFI STA mode and TCP client Supports AP enable, self-defined SSID / password, self-defined IP and network duration Automatic scanning of peripheral WiFi hotspots Support STA enable, DHCP, self-defined IP It supports TCP Server, TCP Client, UDP Server, UDP Client and UDP local broadcast Globally unique MAC address acquired from IEEE Supports automatic DNS resolution of the remote server address Works with all gateways, switches, routers It can work in LAN, and on the Internet (external network)
Processor	ARM
Flash	32k byte
Master	Up to 6 (Attenzione ! On COMM side it's always an RS485)
<b>WIFI</b>	
Wireless standard	802.11 b/g/n
Network typr	STA/AP/STA+AP
Safety	WEP/WPA-PSK/WPA2-PSK
Encryption	WEP64/WEP128/TKIP/AES
Network protocols	IPv4, TCP/UDP/HTTP
Frequency range	2.412 GHz – 2.484 GHz
<b>SERIAL COMM</b>	
Number of serial ports	1
Protocol	ModBus RTU over TCP
Interface standard	TTL
Data Bits	8
Stop Bit	1
Check bit	1
Baud rate	600 bps ~ 460.8 Kbps
Flow control	Null
Buffer	Receive: 800 bytes
<b>SOFTWARE</b>	
Configuration	Via HTTP Web Server interno
<b>GENERAL</b>	
Dimensions	28 x 87 mm, depth 20 mm
Supply	Self-powered by the instrument it is connected to
Power	<1W
Mounting	On OMEGA DIN A
Operating / storage temperature	0... 50°C (32... 122°F)/-20...+60°C (-4... 140°F)
Operating humidity	5... 95 RH% without condensation

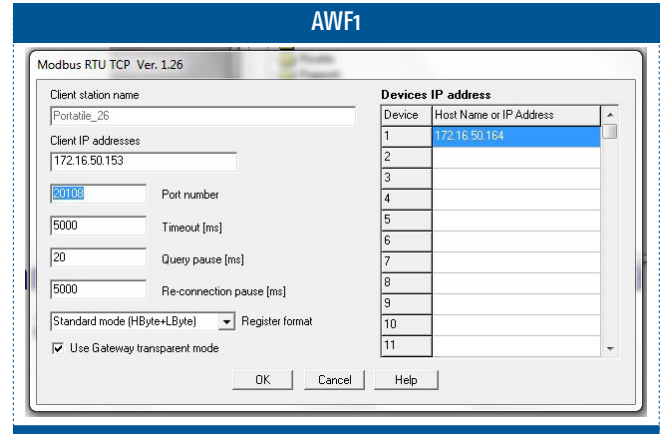
## HOW TO ORDER

To compose the instrument code, choose one of the options for each variable.

AWF1	CODE
MODEL	
Gateway TTL/WIFI – standard version	----

Note: a 20 cm TTL cable is supplied (code CATTLD020).  
In case of different needs, please contact our sales department.

## SCREEN SHOT



## DIMENSIONS

