

AT on Cloud
Everything under control,
wherever you are



AT ON CLOUD

- ◆ The remote monitoring of machines and plants via Internet
- ◆ Monitoring, historical data recording, alarm management, parameter amendment
- ◆ Remotely via web with PC, smartphone, tablet



REMOTE WEB MANAGEMENT: SO MANY BENEFITS!

What are the needs of the machine and system manufacturer today?

To differentiate themselves from the competition, to optimize costs and to offer value-added services to build customer loyalty.

Remote management solutions with AT ON CLOUD helps you get all these benefits.

It makes it possible to intervene in a timely manner to provide corrective action and / or maintenance.

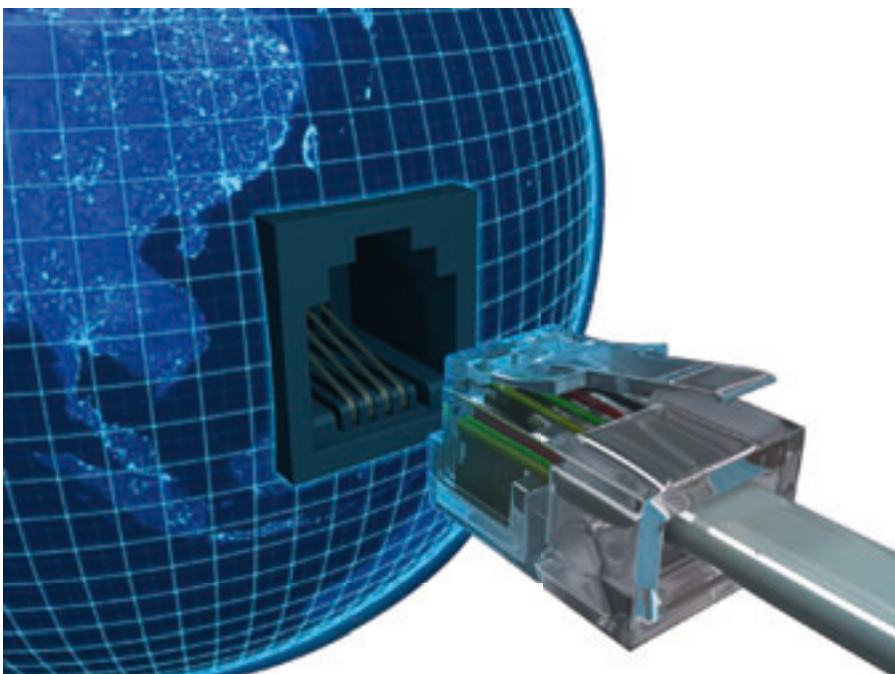
With data recording analysis it's possible to understand the cause of malfunctions and, intelligently intervene correcting and optimizing the operation to minimize machine or system downtime.

No installation required. Remote management on the web enables you to:

Manage your installations wherever you are, without having to install client software on the access terminal.

Timely assistance thanks to real-time alerts via configurable SMS or email messages. In this way, you will immediately know the type of problem in order to implement the most effective solution.

Accurate analysis of data process through access to the historical database. Also available are zoom tools and exporting data in csv format.





Reduction of interventions in the field due to access to real-time data and implementation of parameter changes via the web.

Remote control is a plus that enables a **better service** to the end customer. The efficiency of the system is improved by the timely intervention and organization of preventive maintenance, through the setting of indicative performance indices (KPI) and with continuous warning of system performance changes.

Customization and automatic report generation in acrobat and excel formats.

Applications:

- ◆ Power station management;
- ◆ Energy consumption detection;
- ◆ Remote control of machines and plants.

Access to facilities from the web portal means you have no software to install and update/maintain on your PC.

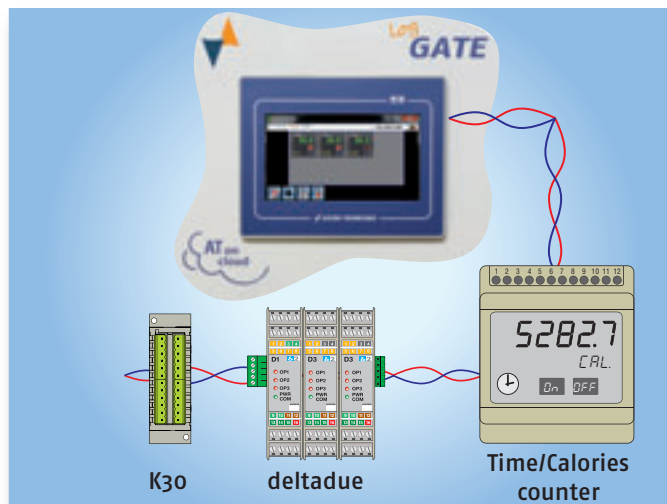
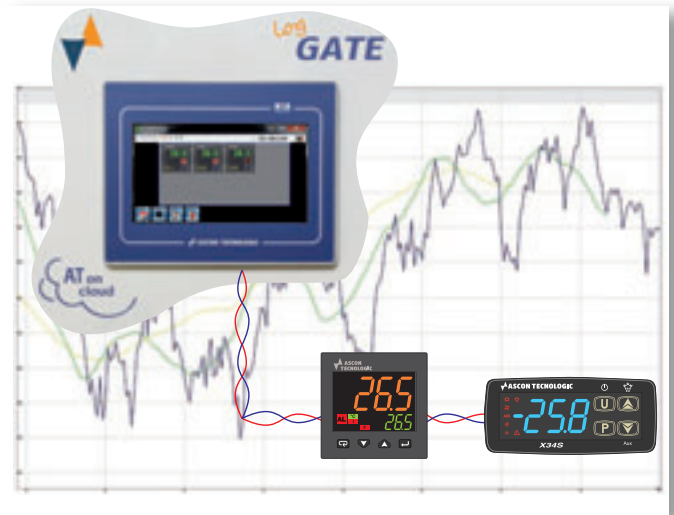
You can use any device connected to the Internet, PC, notebook, tablet and even your smartphone.



DATA LOGGER FUNCTIONALITY

AT LogGATE is a viewer and a real time local data recorder. In particular it performs:

- ◆ Acquisition of variables from the controllers and I/O modules via RS485;
- ◆ Scriptures of SP into the controllers;
- ◆ Acquisition and display of alarm functions;
- ◆ Entering of variables in csv format;
- ◆ Trend variables captured and recorded.



Synoptic pages

The home page can be customized on request with a synoptic representing the machine or the system under control.

The flexibility of the solution permits connection of I/O modules to acquire measurements from the field (eg sigma I/O or Deltadue series) and third-party measurement devices (Modbus RTU protocol) such as calorie or energy meters.

Data export and reports

Daily files of recorded data can be transferred to be viewed on a PC in spreadsheet format.

The data export can be made via a USB key or via Ethernet using FTP protocol (a PC FTP client application is necessary).



GATE FUNCTIONALITY

AT LogGATE, in addition to data logging functionality, allows remote access via the web through the AT ON CLOUD portal to the field devices.

The device interrogation, to obtain the data in real time, may be:

- ◆ Using Modbus TCP;
- ◆ Viewing from the Web VNC server enabled on the panel.

With this feature, AT LogGATE becomes a container of recorded measurements which are periodically read from the server via FTP protocol (eg. Once a day).

In the case of alarm condition, AT LogGATE sends data as soon as they are received and the server then works in real time by sending the appropriate signals via SMS or email to the recipients set during configuration.



Connection via ADSL or office network

Remotely "via web", the AT ON CLOUD portal connects to AT LogGATE using the wired corporate network or the ADSL.

The equipment will be connected to an ethernet source, enabled for internet browsing.

The connection remains active and the data exchanged only as required.

Connection via 3G/4G

From remote "web", AT ON CLOUD portal connects to AT LogGATE through the telephone network 3G/4G.

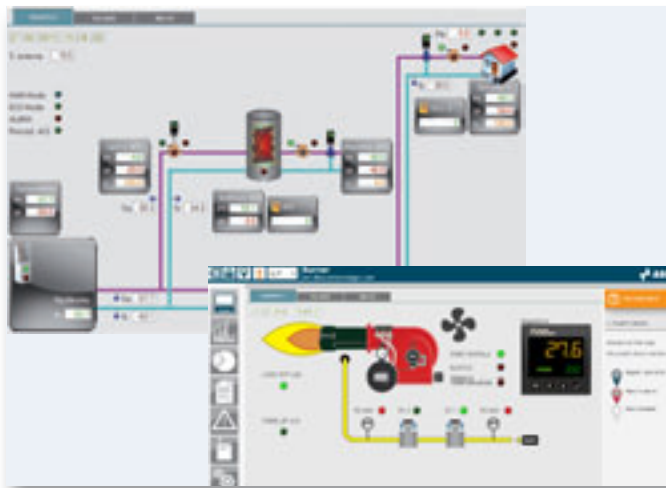
Also in this case the connection is constantly active and data is exchanged only as required.

Charges are limited to the packets of data actually exchanged and not the duration of the connection.

SIM cards employed are MachineToMachine type (M2M) and cover data traffic up to 2 Gb per month, sufficient to cover the traffic of the most demanding installations.



Viewing all installations on a geographic map and seeing a representation of the state of system (regular, alarm, warning). At a glance you have the whole situation in view and abnormalities can easily be identified.



The synoptic can be configured to represent the machine or system in management. A simple picture can be displayed or optionally you can create a dynamic synoptic generated automatically depending on the devices present in the plant.

Graphical display of data stored by historical trend is available with zoom and scroll through the data.

The selected range can be exported in CSV format to be reworked in spreadsheets. Optionally the advanced parameters can be modified from the web platform that records all changes made.



AT ON CLOUD is the portal through which you can control and manage all plants or machines worldwide.

The solution AT ON CLOUD supports access to all the latest generation of tablets (with operating systems based on Android, iOS and win 32/64 bit).



The server has redundancy for maximum safety: An automatic data aggregation organises storage in an optimized manner, enabling timely access to high sample rate data in the most recent period.

Encrypted security protocols allow a high level of data protection.

There are different levels of access to the portal:

- ◆ **User:** permits supervision of data and plant status;
- ◆ **Service:** permits competent personnel to change parameters of the basic systems;
- ◆ **Administrator:** provides full access to the all levels and parameters.

Optional services:

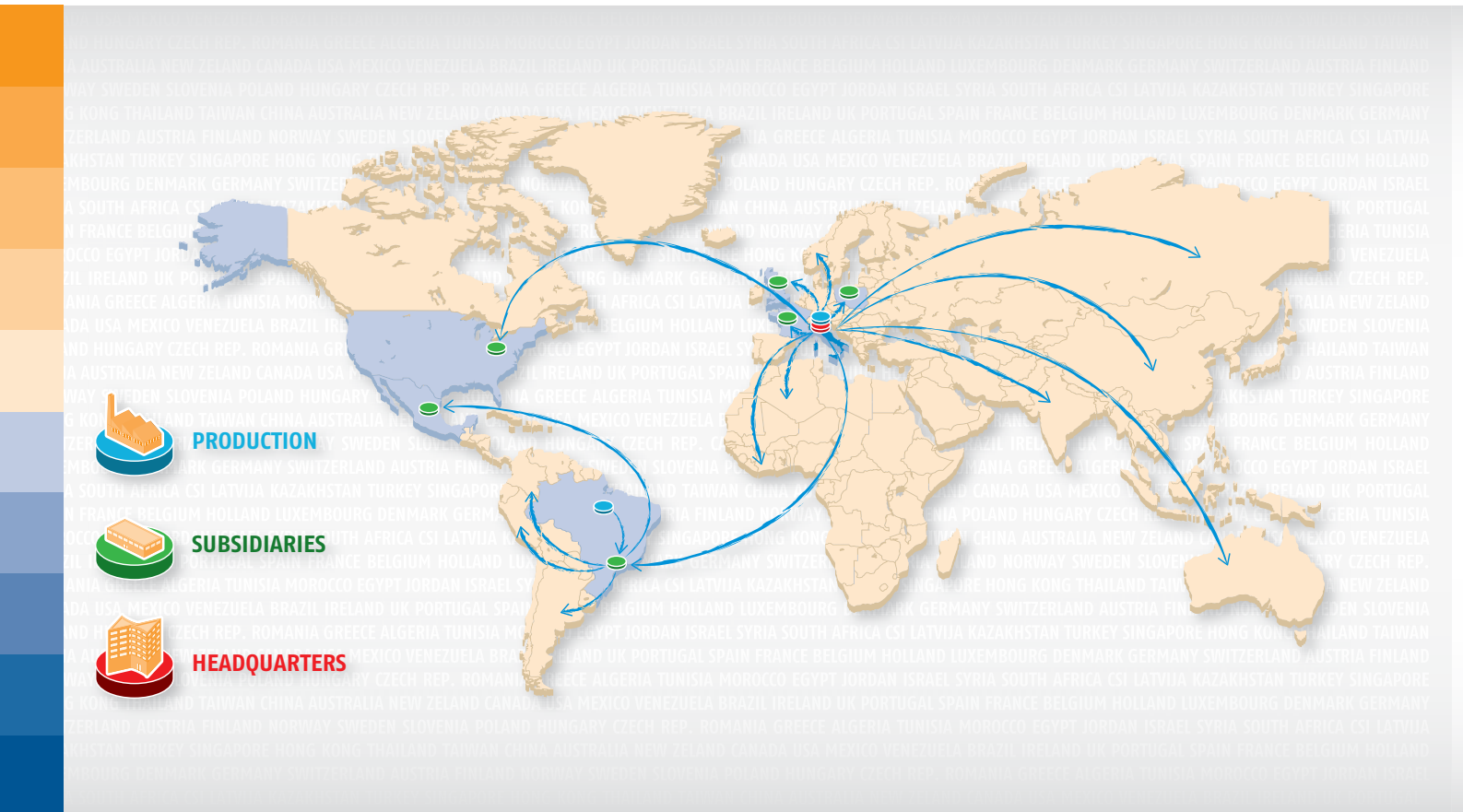
- ◆ You can include in the web space specific documentation for the plant (datasheets, manuals, etc.);
- ◆ You can define reports periodically and have them automatically generated;
- ◆ You can use custom web domains: for example, you can offer the service to your customers using your website as an interface.



Ascon Tecnologic s.r.l.
viale Indipendenza, 56 · 27029 Vigevano (PV) Italy
tel +39 0381 69 871 · fax +39 0381 69 87 30

info@ascontecnologic.com
www.ascontecnologic.com

**COMPANY WITH
MANAGEMENT SYSTEM
CERTIFIED BY DNV GL**
= ISO 9001 =
= OHSAS 18001 =



PRODUCTION



SUBSIDIARIES



HEADQUARTERS

Ascon Tecnologic France
BP 76 · 77202 – Marne La Vallée Cedex 1
tel. +33 1 64 30 62 62 · fax +33 1 64 30 84 98
info@ascontecnologic.fr
www.ascontecnologic.com/fr

Tecnologic uk ltd
Unit Number 1, Farnborough Business Centre
Eelmoor Road, Farnborough
Hampshire GU14 7XA
tel. +44 125 2377 600 · fax +44 125 2377 60
sales@tecnologicuk.co.uk
www.t-uk.co.uk

Ascon Polska Sp. z o.o.
KOCHCICE ul. Kochanowicka 43
42-713 Kochanowice
tel. +48 34 35 33 619 · fax +48 34 35 33 884
info@ascon.pl
www.ascon.pl

Ascon Tecnologic – North America
111 Brook Park Road
Cleveland, OH 44109
tel. +1 216 485 8350 ext. 229
info@ascontec-na.com
www.ascontecnologic.com/en

Coelmatic Ltda
Al. Vicente Pinzon, 173 – 9º andar
Sao Paulo · SP – CEP 04547 – 130
tel. / fax +55 11 2066-3211
info@coel.com.br
www.coelmatic.com.br

Coelmatic SAPI SA de CV
Dr. Pedro Noriega #1099 – Col Terminal
Monterrey, Nuevo León – CEP 64570
tel. +52 81 8104 1012
info@coelmatic.com.mx
www.coelmatic.com.mx



Distributors and assistance Worldwide. Contact Ascon Tecnologic for more info.